

This manual is for reference and historical purposes, all rights reserved.

This creation is copyright© by M. Butkus, NJ, U.S.A.

These creations may not be sold or distributed without the expressed permission of the producer

I have no connection with any camera company

### On-line camera manual library

If you find this manual useful, how about a donation of \$2 to:

M. Butkus, 29 Lake Ave., High Bridge, NJ 08829-1701

and send your e-mail address so I can thank you.

Most other places would charge you \$7.50 for a electronic copy or

\$18.00 for a hard to read Xerox copy.

**This will allow me to continue this site, buy new manuals and pay their shipping costs.**

**It'll make you feel better, won't it?**

**If you use Pay Pal, go to my web site**

**[www.orphancameras.com](http://www.orphancameras.com) and choose the secure PayPal donation icon.**

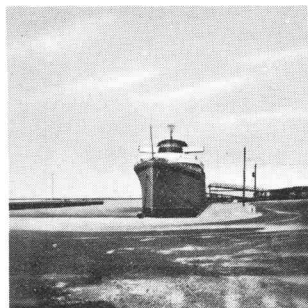
# Mamiya

a complete system for  
twin-lens reflex photography

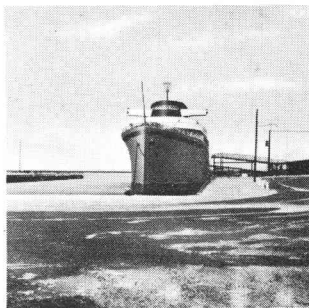
www.orphancameras.com



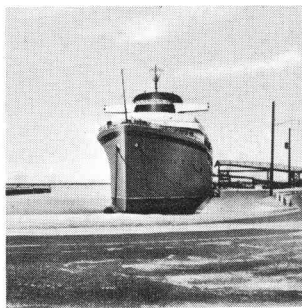
# Mamiya the multi-lens TLR



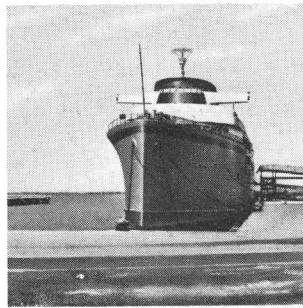
55 mm f 4.5  
(picture angle 70° 30')



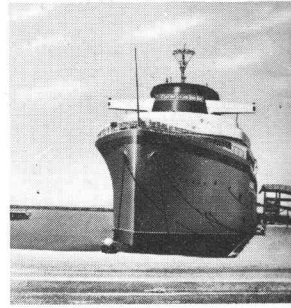
65 mm f 3.5  
(picture angle 63° )



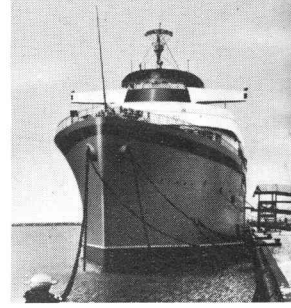
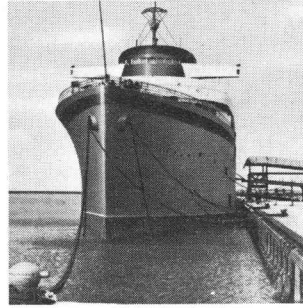
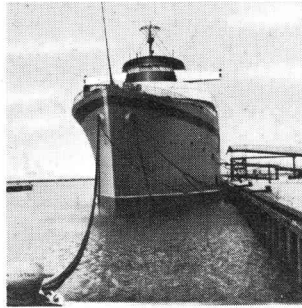
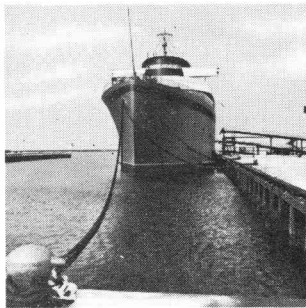
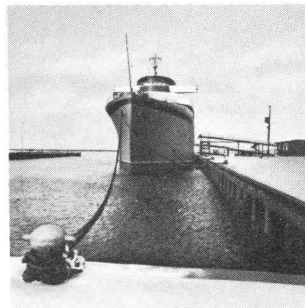
80 mm f 2.8  
(picture angle 50° 40')



105 mm f 3.5  
(picture angle 41° )

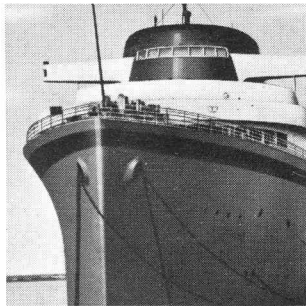


135 mm f 4.5  
(picture angle 33° )

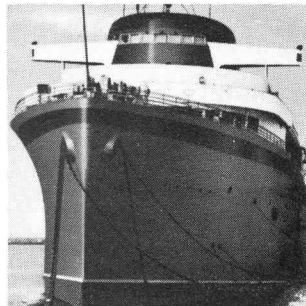
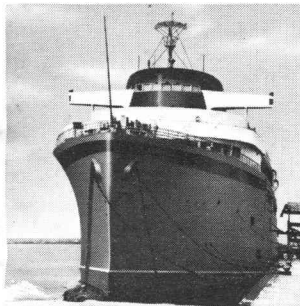




180 mm f 4.5  
(picture angle 24° 30')



250 mm f 6.3  
(picture angle 18° )



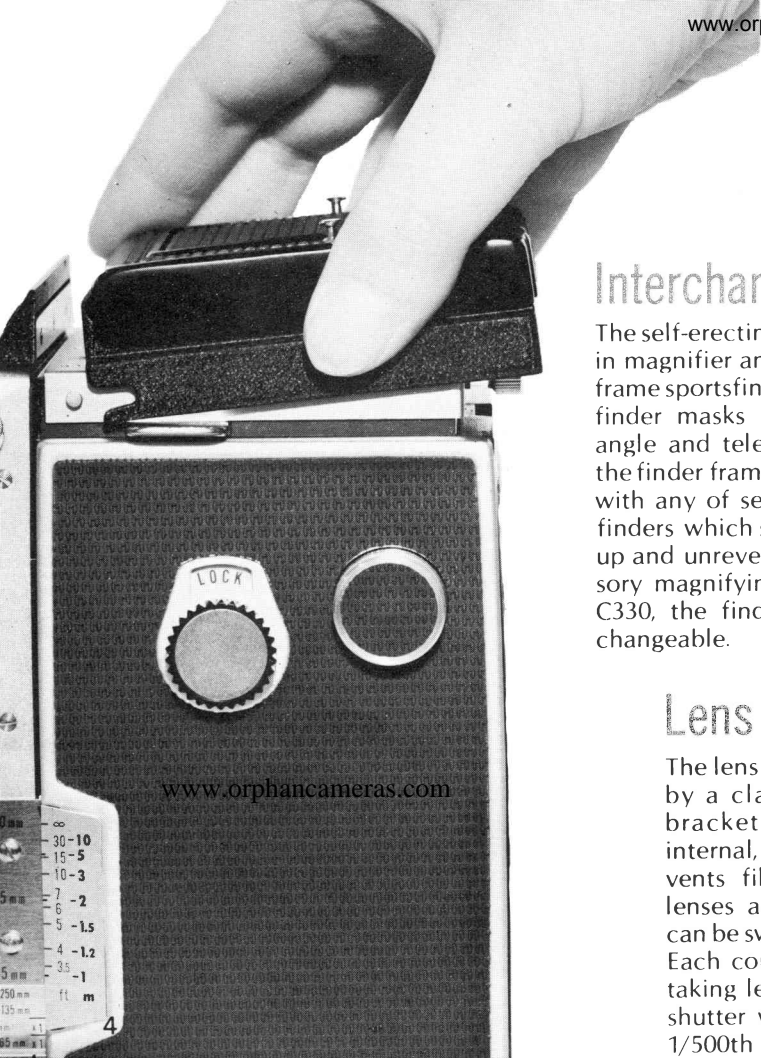
It is easy to see why the twin-lens reflex enjoys its wide-spread popularity among photographers.

The relatively large picture format, constantly bright focusing screen and ever-present viewing image give the user an ease of focusing and composition which seems to provide a positive sense of picture certainty.

To these basic advantages, Mamiya adds a new dimension of pictorial control through lens interchangeability. Being able to change image size, picture angle and perspective by simply changing lenses is as important to the working professional as it is to the serious hobbyist. And among all twin-lens reflex cameras, Mamiya was first to offer this vital facility.

The pictures on the opposite page illustrate the creative flexibility you enjoy with a Mamiya TLR and its interchangeable lenses. In the seven pairs of photos shown, those in the upper row represent the use of different lenses to obtain changes in picture angle or image. All were taken from the same position, at the same distance from subject.

How the same lenses can be used to change perspective is shown by the pictures in the bottom row. All were taken at different subject distances. In each instance, the photographer moved closer or farther away to maintain the same relative position of foreground and background objects.



## Interchangeable finders

The self-erecting finder hood has a built-in magnifier and converts into an open-frame sportsfinder. The accessory sportsfinder masks showing fields of wide-angle and telephoto lenses snap onto the finder frame. The hood interchanges with any of several accessory eyelevel finders which show the image right side up and unreversed, and with the accessory magnifying hood. In the Mamiya C330, the finder screen is also interchangeable.

## Lens interchangeability

The lens in use is secured on the camera by a clamp bracket. Unlocking the bracket automatically interposes an internal, light-tight shield which prevents film from being fogged while lenses are being interchanged. Lenses can be switched in a matter of moments. Each consists of matched viewing and taking lenses, the latter in M-X synchro shutter with speeds from 1 second to 1/500th plus 'B'.



# special features

## Choice of films

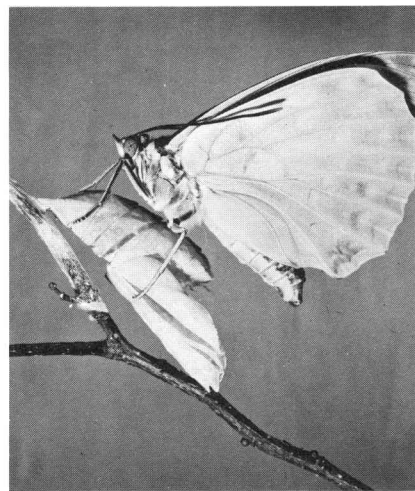
Both Mamiya C220 and C330 accept 220 as well as 120 roll film without changing backs. Straight film path from feed to take-up spool, in combination with precisely designed film gate and pressure plate, assures absolute flatness of film during exposure. The C330 back interchanges with an accessory adapter back for use with sheet film/plate holders.

## Rugged construction

Mamiya twin-lens cameras were intended for professional use and are built accordingly. Use of heavy-duty rack-and-pinion focusing drive and structural reinforcement insures rigid maintenance of parallelism between lens standard and film plane. Many of the original Mamiya TLR models are still in constant use, after more than 14 years of reliable day-in/day-out service.

## Closeup capabilities

Long focusing bellows of Mamiya TLR cameras permit closeups without special attachments—to 3" with 55mm lens. The accessory paramender provides full parallax correction for extreme close-ups with tripod-mounted camera.

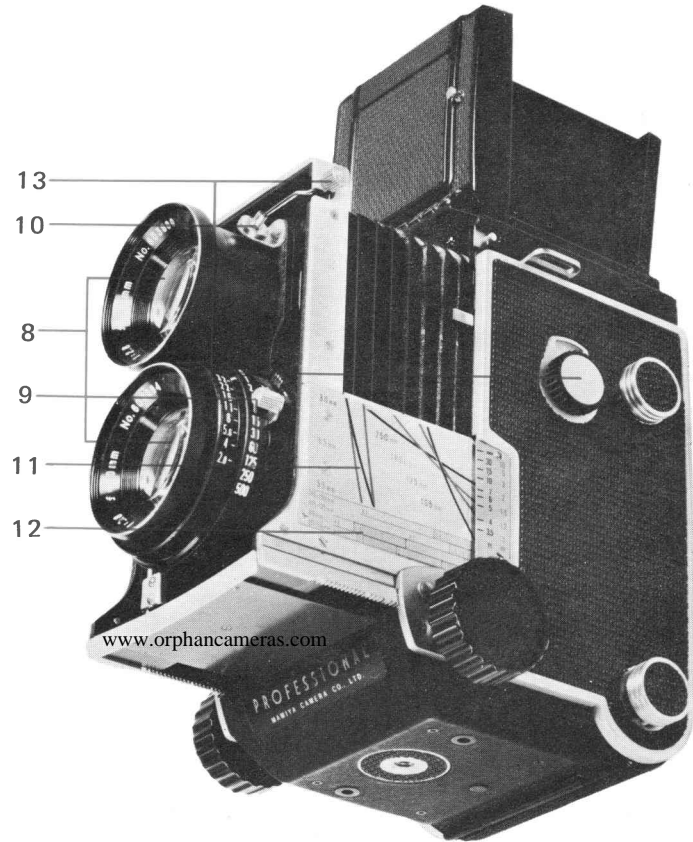
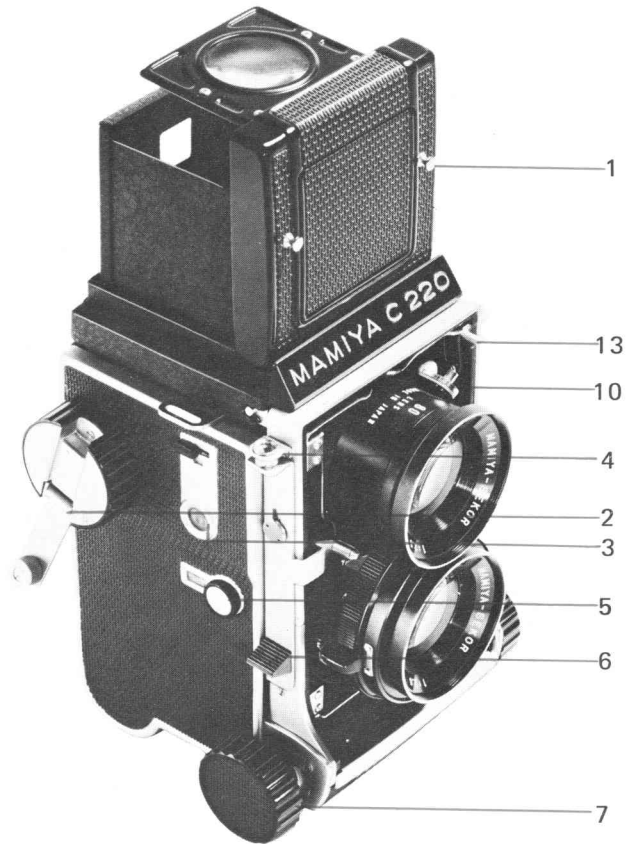




- a.** choice of film transport, using ratchet-wind knob or fold-out rapid crank. Film stops automatically at each exposure.
- b.** bright Fresnel-type focusing/viewing screen with indicator lines for parallax correction.
- c.** color-coded distance scales and closeup exposure increase guide for all lenses.
- d.** accepts 120 and 220 roll film interchangeably. Simply rotate pressure plate and preset exposure counter for film in use.

1. removable focusing/viewing hood with magnifier and sportsfinder
2. film wind knob with fold-out crank
3. auto-reset exposure counter with selector for 120 and 220 film
4. cable release socket
5. provision for intentional double exposures
6. body shutter release
7. focusing knobs permit operation with either hand
8. lens unit with matched finder and taking lens
9. M-X synchro shutter, 1 second to 1/500th plus 'B'
10. standard PC flash terminal
11. color-coded focusing scale for all lenses
12. closeup exposure factor scales for all lenses
13. lens lock and safety control







# Automatic Mamiya C330

The Mamiya C330 Automatic starts with the basic features of the C220 and adds ingenious automatic facilities for extra handling ease and speed. Both cameras draw on the same battery of 7 high-quality lenses and the same complement of precision accessories.

## Automatic film/shutter crank

A single, rapid sweep advances the film, cocks the shutter and registers the exposure on the counter, simultaneously. The film can't be overwound. And there can be no accidental double exposures, though they can be made intentionally, whenever desired.

## Automatic parallax compensation

Viewing errors when shooting closeups are all but impossible with the C330. As you focus the camera, a bar line moves automatically across the finder screen, showing the progressive change in picture area due to parallax. You cannot accidentally cut off part of the subject on the film. A control dial lets you preset this compensation for the various lenses.

## Automatic exposure factor indicator

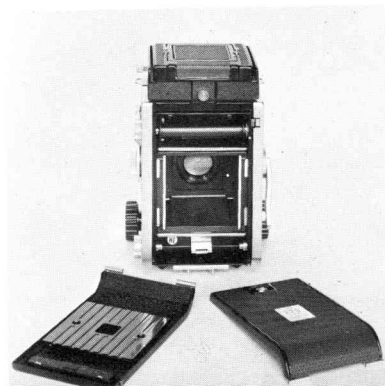
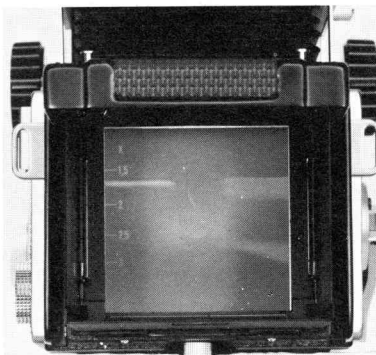
The parallax-compensating bar line also indicates the correct exposure increase factors for closeup and copy photography. With the camera brought into focus, the bar line points to the exact exposure multiplication factor for the selected camera-subject distance.

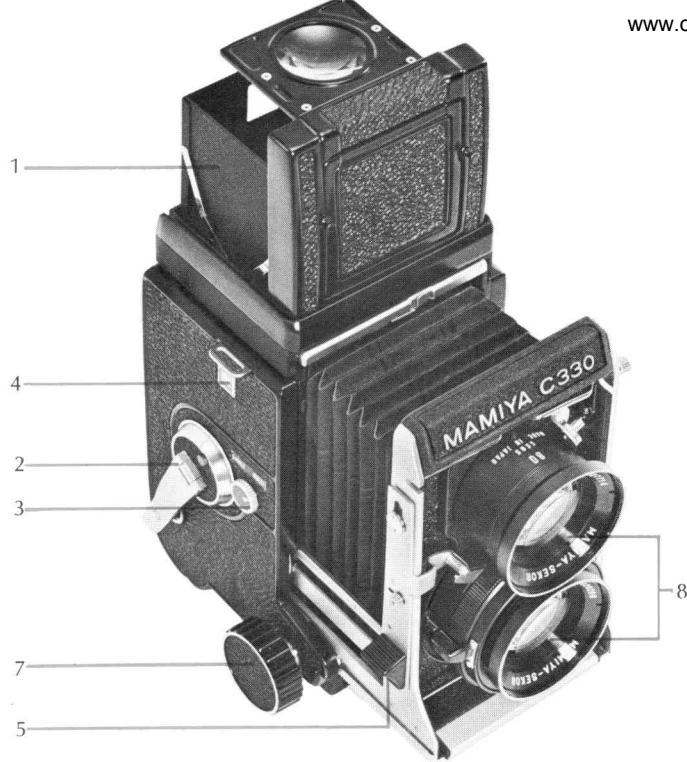
## Interchangeable finder screens

This unique facility of the C330 enables the photographer to select any of six different Fresnel-type screens to fit specific applications or personal preference.

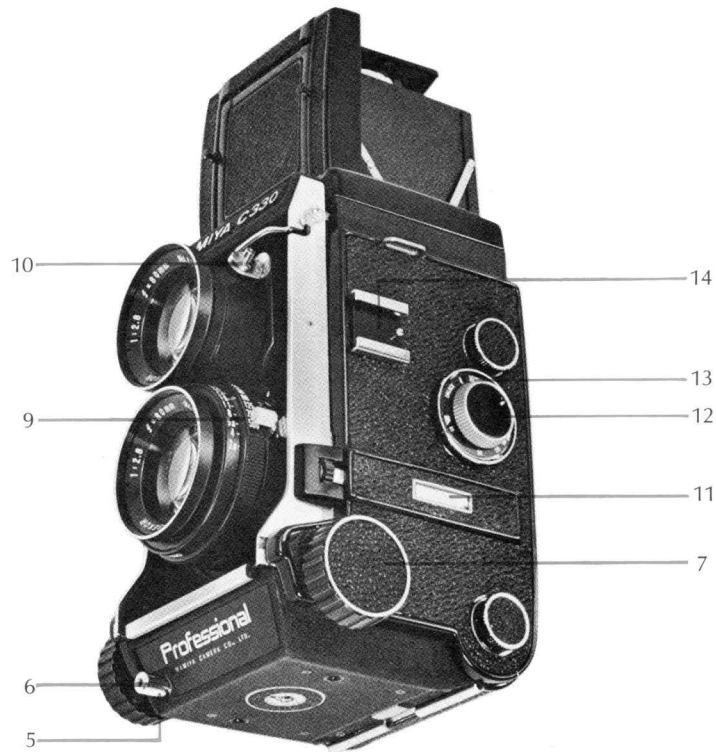
## Roll film, sheet film and plates

The C330 rollfilm back, as that of the C220, accepts both 120 and 220 film. In the C330, however, rotating the pressure plate also automatically presets the exposure counter. Moreover, the C330 back interchanges with an accessory sheet film/plate adapter.





1. removable focusing-viewing hood (shown used as open-frame sportsfinder with built-in magnifier raised)
2. rapid transport crank simultaneously advances film, cocks shutter and counts exposure
3. provision for intentional double exposures
4. auto-reset exposure counter for 120 and 220 film
5. body shutter releases (either may be used)
6. cable release socket
7. right- and left-hand focusing knobs



8. matched finder- and taking-lens set
9. M-X synchro shutter: 1 sec to 1/500 plus 'B'
10. standard PC flash terminal
11. distance scales for all lenses on rotating hexagonal bar
12. lens presetting dial for automatic parallax compensation
13. ASA film speed indicator
14. accessory shoe

## Weddings

After shooting preliminary formals with the 105mm lens, the photographer will switch to the 55 or 65mm wide angle for coverage of ceremony, table groups and candids. Moving in and out quickly is no trick with the compact, fast-handling Mamiya. Use of 220 roll film provides 24 continuous exposures, and semi-automatic loading speeds film changes. All lenses have M-X synchro shutters.



[www.orphancameras.com](http://www.orphancameras.com)



## Portraiture

The Mamiya TLR has no peer as a portrait camera, whether tripod-mounted for formal sittings or handheld for candid shots. Use of the 135 or 180mm lens assures pleasing perspective and background separation while preventing distortion of features often produced by shorter lenses. No less important is the large image obtained with long-focus lenses at comfortable working distances.

## Sports

Follow the action with the viewing hood folded into an open-frame sportsfinder, or switch to one of the accessory eye-level finders. The accessory grip handles provide a secure, comfortable hold for eyelevel shooting. Use the 180mm or 250mm telephoto to bring action up close; change to 80mm or 65mm lens for full-field coverage. Electronic flash can be used at all speeds, with all lenses.

## News

Mamiya TLR's have produced more than their share of award-winning news photos. More and more newspapers are switching to this rugged, reliable camera for all their work, color as well as black-and-white. The automatic features of the C330 make this camera particularly suitable for fast-breaking news. Also, the ability to use a wide angle lens with its extreme depth-of-field assures sharp pictures even without critical focusing.



## Commercial/ Industrial/Scientific

Fashion or product shots, interiors, architecture, laboratory specimens or processes—the Mamiya TLR handles them all with professional competence, in studio and on location. The accessory single-exposure back permits use of sheet film and plates, with many special emulsions available. Accurate parallax-free closeups of small objects or selected small areas are easy with the accessory Paramender. The 2¼" square negative can be enlarged to any desired print size.

## Law enforcement

Police and fire departments, as well as insurance companies and private investigators, rely on the versatile Mamiya TLR for critically sharp, fully detailed pictures. Entire camera outfit, including 3 extra lenses and many accessories, fits into the sturdy compartment case, instantly ready for on-the-spot photography from extreme closeups to wide angle shots.





## Personal pictures

Unlike other professional cameras, the Mamiya twin-lens reflex offers all the convenience features and handling speed desired in a camera for personal use. Its precision and versatility allow the serious photographer complete freedom of creative expression and inspire confidence in the quality of his pictures.

## Pictorial photography

With a choice of 7 interchangeable lenses, from 55mm wide angle to 250mm telephoto, the Mamiya photographer enjoys unlimited control of image size, picture angle and perspective. Mamiya lenses are famous for their capacity for delivering negatives and color shots of superb quality and definition.





# accessories

1. **PORROFINDER** for eyelevel viewing and focusing. Shows image right side up and unreversed. Interchanges with standard hood.
2. **CdS PORROFINDER** same as standard Porrofinder but with built-in spot meter system for thru-the-lens exposure measurements. Brightness range EV3-18. Adjusts for films ASA 12 to 6400.
3. **EYELEVEL PRISM FINDER** provides brilliant, unreversed, right-side-up image of entire screen. Interchanges with standard hood.
4. **MAGNIFYING HOOD** adjusts for 3.5x magnification of entire screen or 6x magnification of central picture area. Interchanges with standard hood.
5. **WIDE ANGLE OPTICAL SPORTSFINDER ADAPTERS** show fields of view with 55 and 65mm lenses when viewing hood is used as sportsfinder. Lenses 105mm and longer are supplied with matching sportsfinder masks.
6. **GRIP HANDLE** has wrap-around leather strap for additional steadiness, security. Has built-in accessory shoe for flash unit or light meter.
7. **PISTOL GRIP** helps steady camera for shooting at eyelevel. Trigger release leaves one hand free for focusing.
8. **PARAMENDER PARALLAX CORRECTOR** provides precise, automatic parallax correction for extreme closeups with tripod-mounted camera.
9. **OPTICAL GLASS FILTERS** are coated and optically flat. Full range for color and black & white films, in sizes to fit all Mamiya lenses.
10. **LENS HOODS** slip-on type with set-screw, available for all lenses.
11. **EVEREADY CAMERA CASES** finest leather, with hinged drop front and shoulder strap.
12. **LEATHER LENS CASES** hold lens unit with caps and sportsfinder mask.
13. **PRO COMPARTMENT CASE** has individual compartments for camera with grip handle and eyelevel finder attached, 3 additional lens units, compact flash unit and many other accessories. Made of finest leather, finished in black, with shoulder strap.
14. **INTERCHANGEABLE FINDER SCREENS** for C330. Six Fresnel-type screens are available: with matte spot (standard with camera); clear spot and cross hair; matte spot and vertical & horizontal lines; with 4° split prism and matte ring, and with 6° split prism and matte ring.
15. **ADAPTER FOR SHEET FILM/PLATE HOLDERS** for C330 interchanges with camera back, permits single shots with wide choice of emulsions. Supplied with 3 holders for 2¼x3¼, 2½x3½ and 6.5x9cm sheet film.
16. **CLIP-ON DISTANCE SCALE** for C330 facilitates fast shooting with camera prefocused, using 55, 65 or 80mm lens. Shows subject distance in large, clear numerals visible from above, next to viewing screen.

